

1 Przeczytaj zdania a–j i uzupełnij nimi komiks. Jedno zdanie a–j nie pasuje do żadnej luki.

- | | | |
|----------------------------------|--------------------------------|----------------------------------|
| a Are you working now? | e They recycle rubbish. | h Poor little thing! |
| b Yes, I am. | f Do you often work on Sunday? | i What do they do? |
| c What are you doing? | g No, I'm not. | j Are you diving this afternoon? |
| d What are they up to? | | |



Ella: Alfie! *What are you doing?*

Alfie: I'm fixing the radiator.

Ella: ¹ _____

Alfie: No, I don't but I'm starting my recycling course tomorrow.

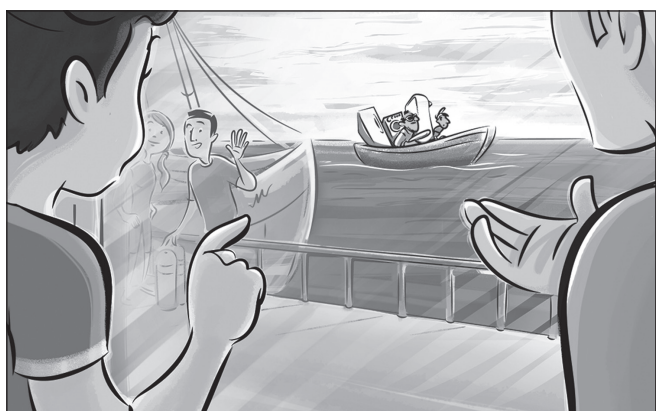


Alfie: And you? ² _____

Ella: ³ _____ I'm collecting my new goggles.

Alfie: ⁴ _____

Ella: ⁵ _____ My friends are waiting for me now.
Look! They're at the harbour.



Alfie: Oh yes. But what's that boat?

Ella: That's odd ... There's a washing machine, and a fridge, and an old bath, and a washbasin! ⁶ _____

Alfie: No idea! I have to take a photo of this.



Alfie: The boat isn't there now but I think the men on it are Dan and Dave.

Ella: Who are they? ⁷ _____

Alfie: ⁸ _____ There's something fishy going on.

2 Zakryj komiks i udziel krótkich odpowiedzi na pytania 1–5.

Is Alfie fixing the radiator?

Yes, he is.

1 Does Alfie often work on Sunday?

2 Is Alfie starting his recycling course tomorrow?

3 Is Ella diving this afternoon?

4 Is Ella working now?

5 Do Dan and Dave recycle rubbish?

3 Podpisz zdjęcia wyrażeniami z ramki. Co oznacza wyrażenie, które nie pasuje do żadnego zdjęcia?

Poor little thing! There's something fishy going on. No idea! What are you up to?

